

CZECH RADIO

in brief

2009

www.rozhlas.cz
e-mail: info@rozhlas.cz

with us you're never alone


ČESKÝ ROZHLAS



Czechoslovakia was the first country in continental Europe to begin regular radio broadcasts. Our first broadcast on **18. 5. 1923** was from a scout tent in the Prague district of Kbely.



status

stations

public service radio

Czech Radio 1 – Radiožurnál (news, current affairs station)

Czech Radio 2 – Praha (station for the whole family)

Czech Radio 3 – Vltava (station devoted to culture)

Czech Radio 6 (news, current affairs station)

Czech Radio – regional broadcasting

Czech Radio Brno – Czech Radio České Budějovice – Czech Radio Hradec Králové – Czech Radio Olomouc – Czech Radio Ostrava – Czech Radio Pardubice – Czech Radio Plzeň – Czech Radio Sever – Czech Radio Regina – Czech Radio Region, Středočeský kraj – Czech Radio Region, Vysočina

Czech Radio 7 – Radio Praha (international broadcasting)

Czech Radio Online (Czech Radio's website)

Czech Radio D-dur (classical music)

Czech Radio Rádio Česko (news, current affairs station)

Czech Radio Leonardo (popular-educational station)

Czech Radio Radio Wave (station devoted to youth)

Czech Radio also supports original artistic radio work (in the form of the Prix Bohemia Radio), important artistic bodies (the Prague Radio Symphony Orchestra, the Czech Radio Big Band, the Brno Radio Orchestra of Folk Instruments, the Dismal Children's Radio Ensemble, Children's Choir) and young musicians from many areas (the Concertino Praga and Concerto Bohemia competitions). It is an active member of the European Broadcasting Union (EBU) and – via the Czech Radio Foundation – is also involved in the area of charity.

FM, MW, LW, SW, DVB-T + live broadcasting on www.rozhlas.cz

Vinohradská 12, 120 99 Praha 2, Czech Republic

info@rozhlas.cz

non-programming activities

broadcasting bands

address

e-mail

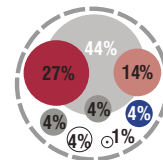
nationwide news-current affairs station
broadcasting 24 hours a day



www.radiozumal.cz

e-mail:
radiozumal@rozhlas.cz

- fast, reliable and thorough information service reporting on both domestic and international events
- commentators offering the widest possible range of views
- up-to-date traffic and weather reports
- interviews, discussions and meetings with interesting people
- religious broadcasting
- broadcasting for minorities
- Czech and foreign popular music



- news
- current affairs
- sport
- arts programmes
- traffic and motoring
- broadcasting for minorities
- religious broadcasting
- music

What you won't find anywhere else

- news, weather and Green Wave traffic reports in the morning **every fifteen minutes**
- every day more than three hours of interviews with **interesting guests**
- direct sports **transmissions** both from home and abroad
- morning reports – **From Close Up** and **Under Your Skin** – interesting human stories and the most burning issues of the day
- entire broadcasts in the **Radio on Demand** sound archive on the internet



Frequencies on FM (MHz)

Brno 95,1 * České Budějovice 91,1 * Domažlice 98,0 * Hodonín 106,2 * Chomutov 98,9 * Jeseník 91,3 Jihlava 90,7 * Karlovy Vary 102,6 * Klatovy 99,8 * Liberec 95,9 * Mariánské Lázně 97,6 * Ostrava 101,4 Pardubice 89,7 * Písek 97,0 * Plzeň-Krašov 89,1 * Plzeň-Radeč 99,2 * Praha 94,6 * Příbram 102,2 Sokolov 94,3 * Sušice 90,6 * Trutnov 88,5 * Třinec 92,1 * Uherský Brod 93,0 * Ústí nad Labem 90,9 Valašské Meziříčí 92,5 * Votice 93,1 * Vsetín 92,1 * Zlín 99,5 * Znojmo 101,2

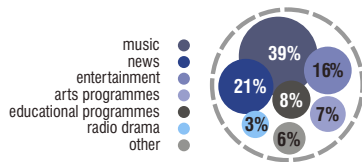
LW Transmitters (kHz) – Mon to Fri 4:00 – 24:00, Sat - Sun 5:00 – 24,00 / Uherské Hradiště - Topolná 270





nationwide station for the whole family
broadcasting 24 hours a day

- a colourful mix of information, educational programmes and entertainment
- programmes for children
- news and current affairs programmes
- broadcasting about free time, interests, pastimes and hobbies
- a wide selection of music - contemporary popular music, oldies, folk, brass band music



What you won't find elsewhere

- this much entertainment
- so many programmes for children
- a fairytale every day
- live broadcasts of religious services

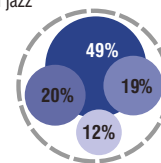
Frequencies on FM (MHz)

Brno 92,6 * České Budějovice 103,7 * Chomutov 94,2 * Hodonín 107,8 * Jeseník 88,7 * Jičín 106,9 * Jihlava 107,1
Klatovy 90,3 * Kutná Hora 102,2 * Liberec 89,9 * Nové Hradky 102,2 * Olomouc 107,2 * Opava 101,7 * Ostrava 101,9
Pardubice 100,1 * Písek 98,9 * Plzeň 101,7 * Praha 91,2 / 100,7 * Třinec 107,8 * Slavonice 103,3 * Ústí n/L 98,6
Valašské Meziříčí 89,9 * Votice 103,2 * Vrbno pod Pradědem 103,6 * Vsetín 102,9 * Zlín 107,7 * Znojmo 89,6
Transmitters MW (kHz) České Budějovice 954 * Dobrochov 954 * Karlovy Vary 954 * Praha 639
Moravské Budějovice 1332 * Ostrava 639 – until 6:00 PM.



nationwide station aimed at people with
an interest in music, the spoken word
and culture in the widest sense of the word
- broadcasting 24 hours a day

- almost 70% of broadcasting consists of classical music and jazz
- literature, drama and documentaries at prime times
- complete daily arts listings
- simple and clear programme schedule
(the same genres are featured at the same time every day)



- classical music
- arts information
- arts news
- spoken word
(drama, prose, poetry)
- jazz and other genres of music

What you won't find elsewhere

- live broadcasts from opera houses and concert halls around the world
- radio documentaries and radio drama
- jazz, ethnic and other specific genres of music
- **Klub Vltava** offers closer contact with broadcasts and publishes an exclusive quarterly, the *Magazín Klubu Vltava*, with information from the world of culture.



Frequencies on FM (Mhz)

Brno - Kojál 102,0 * Brno - Město 90,4 * České Budějovice 96,1 * Hodonín 100,4 * Cheb 106,2 * Chomutov 96,3
Jeseník 98,2 * Jihlava 95,4 * Kaplice 105,9 * Karlovy Vary 105,7 * Kašperské hory 107,2 * Klatovy 88,6 * Liberec 103,9
Ostrava 104,8 * Pardubice 102,7 * Písek 105,2 * Plzeň - Krašov 95,6 * Plzeň - Radeč 93,3 * Praha 105,0 * Pířbram 107,0
Trutnov 101,9 * Ústí nad Labem 104,5 * Valašské Meziříčí 96,8 * Varnsdorf 88,4 * Vsetín 98,3 * Zlín 94,8 * Znojmo 99,2

www.rozhlas.cz/cro6

e-mail:
cro6@rozhlas.cz



**Nationwide news-current affairs station
broadcasting from 18.00 to 24.00 on AM**

- live broadcasting on the internet and transcriptions of selected programmes and reports
- offers objective news, analysis and discussion of domestic and regional issues
- programmes with a religious theme
- Radio on Demand – a unique internet service for listening to broadcast programmes



We promise you

- extensive news from home and abroad
- current affairs analysis and comments
- information from all areas of science and culture
- environment, education and healthcare
- civic society

Frequencies on AM (kHz)

České Budějovice 954 * Dobruchov 954 * Karlovy Vary 954 * Moravské Budějovice 1332 * Ostrava 639
Praha-Liblice 639

Programme you can tune up also on **DVB-T** system in Czech Radio Rádio Česko programme **Multiplex 1**



**Radio Prague – The International Service
of Czech Radio: the latest news
from the Czech Republic in six languages**



ČESKÝ ROZHLAS 7

www.radio.cz

e-mail:
cr@radio.cz

- broadcasts in English, German, French, Spanish, Russian and Czech
- aimed at listeners outside the Czech Republic
- available on shortwave, on the Internet – www.radio.cz (MP3, RealAudio) and in Europe and North America via satellite, podcasting from 2006
- English broadcast available in Prague on 92.6 FM, Monday – Thursday, from 7.05 to 7.20 pm



Frequencies on SW

13 m * 16 m * 19 m * 25 m * 41 m * 49 m

For detailed information on broadcasting times and frequencies see www.radio.cz.

ČRo 7 - Radio Praha can be received via the CS Link satellite system and also in German and English on Eutelsat Hotbird 5



www.rozhlas.cz

e-mail:
see contacts

Czech Radio – Regional broadcasting

We broadcast from our studios
in the regional cities: Brno, České Budějovice, Hradec Králové, Jihlava, Karlovy Vary, Liberec, Olomouc, Ostrava, Pardubice, Plzeň, Praha, Ústí nad Labem, Zlín

- over the 2000 – 2002 period, independent programming for the Central Bohemia, Vysočina and Pardubice regions were introduced; “local windows” were gradually expanded to the Karlovy Vary and Zlín regions, from 2005 also to the Liberec region
- Czech Radio’s long-term goal is to have a regional broadcasting structure in place in which each region would have its own radio station
- The Centre for Regional Development creates the conditions and space for the best regional station programmes to be shared and for collaboration over select programme

series, particularly involving spoken-word and music production. The programming and editing at the Centre improve the variety and quality of the programme range on offer and bring together the creative potential of the regions for more challenging projects.

We promise you

- regional news, current affairs and music
- arts, documentary programmes and smart entertainment
- regional made high-quality creative programmes



Frequencies on FM (MHz)

Brno - 106,5 - 89,5 - 93,1 - 93,6 - 97,5 - 97,3 - 99,1 - 107,3 * České Budějovice - 88,2 - 106,4
Hradec Králové - 90,5 - 95,3 - 96,5 * Olomouc - 106,8 - 92,8 - 88,7 - 101,6 * Ostrava - 107,3 - 99,0 - 105,3 - 102,6 - 95,5
Pardubice - 104,7 - 101,0 - 102,4 - 98,6 * Plzeň - 106,7 - 106,7 - 91,0 - 95,8 - 102,4 - 105,3 - 103,4 - 100,8 - 96,7 - 106,3 - 98,2
Sever - 88,8 - 91,3 - 98,5 - 102,3 - 103,1 - 97,4 - 107,9 * Regina - 92,6 * Region, Středočeský kraj - 100,5 - 100,3
100,0 - 100,4 - 99,0 - 87,6 * Region, Vysočina - 87,9 - 90,1

There are no borders for us on the
world-wide web. Even in the furthest
flung parts of the world everyone
can enjoy Czech Radio Online



- news and information from the Czech Republic and around the world
- the latest information from the world of science and technology
- news about the world of nature
- arts news
- information about interesting radio programmes
- sound recordings from the radio archives



Selected Pages

- Digital – everyday news about digital broadcasting
- Children’s pages – games and learning for children of all ages
- Nature – where else can you find an audio atlas of animals?
- World – reports and photos from around the world

What you won’t find elsewhere

- audio archive and recordings of selected programmes
- content suited to different times and moods

Relax with Czech Radio’s internet pages

www.rozhlas.cz

e-mail:
online@rozhlas.cz

www.rozhlas.cz

www.radiocesko.cz

e-mail:
cesko@rozhlas.cz



Czech Radio Rádio Česko
the news and current affairs radio station
from Czech Radio broadcasts every working day
from 7 to 11 am and from 1 to 4 pm

- fast, reliable and comprehensive information on events both at home and abroad
- interviews with politicians, economists and other experts
- up-to-date current affairs, commentary and notes
- direct broadcasts from important events



What you will not find elsewhere

- comprehensive news reports every 15 minutes
- detailed financial and sports information every hour
- a stream of important information with no music
- analytical interviews give you the background on important events at home and abroad

Czech Radio - Rádio Česko you can tune up:

- on BBC frequencies (VKV/FM - MHz): Zlín 93,9 * Olomouc 105,6 * Brno 101,3 * Liberec 99,2
- Ostrava 106,3 * Plzeň 98,6 * Ústí nad Labem 105,8 * České Budějovice 89,8
- Pardubice/Hradec Králové 99,1 * Praha 101,1 * Jihlava 96,7 * Karlovy Vary 94,7
- on DVB-T in Multiplex 1
- on www.radiocesko.cz webpage

Czech Radio D-dur
broadcasts classical music from Renaissance
to 21st century works 24 hours a day – a station not
only for those "seriously interested in serious music",
as well as for those who just need classical music
as a pleasant accompaniment to their work or leisure



www.rozhlas.cz/d-dur

e-mail:
d-dur@rozhlas.cz

- the finest works of music are repeated at different times of the day each time they are broadcast
- the very best recordings from the vast Czech Radio archives are included in the schedule
- there is a direct broadcast or recording of a concert every working day from 8 pm and opera every Sunday from 4 pm
- the schedule is prepared by experienced Czech Radio 3 – Vltava programme planners
- the station is to be broadcast at the highest possible technical standard on the internet and using DVB-T system
- Music for free download

What you will not find elsewhere

- web services – discussions on classical music
- Recordings, encyclopedic information on composers



Where will you hear us?

www.rozhlas.cz/d-dur + digital broadcasting DVB-T (Multiplex 1), DVB-S (CS Link),
number of cable TV services, IPVT (02 TV a Volný TV)



www.rozhlas.cz/
leonardo

e-mail:
leonardo@rozhlas.cz



A digital and internet station popularizing
science, technology, nature, history and medicine

- extensive web offerings:
live broadcasts, sound archives, podcasts, articles, multimedia
- hour-long special-subject magazines, interviews and discussions
- the best from the broadcasts of other Czech Radio stations (Meteor, Rambles through the Czech Past, Planetarium, Techno...)



What you won't find anywhere else

- **Enter!** – interviews with leading scientists and upcoming talent (workdays from 11.00 a.m. and 8 p.m.)
- **Third Dimension** – discussions on current topics (workdays from 2 p.m. and 10 p.m.)
- magazines: from Monday to Saturday we focus on technology, medicine, variety from world cultures, nature, history and astronomy (workdays from 9 a.m.)
- **Monitor** – streaming novelties and points of interest (workdays from 10 a.m.)
- **Nota Bene** – programme focusing on ethnic music, rock and jazz

Where can you hear us?

www.rozhlas.cz/leonardo + DVB-T digital broadcasting (Multiplex 1) and DVB-S (CS Link), some cable TV services, IPTV (O2 TV and Volný TV)

A special Czech Radio station
specifically targeting active young people



www.wave.cz

email:
radiowave@rozhlas.cz

- we focus on listeners who are looking for something untraditional and who are interested in music, its individual genres and new trends
- the playlist is made up primarily of indie guitar, post rock, nu-folk, electro, quality pop and alternative hip hop
- apart from music, Radio Wave also focuses on theatre, film, lifestyle, current affairs and adrenalin sports such as skateboarding, snowboarding, water diving, B.A.S.E. jumping and the like.

What you won't find anywhere else

- **Exclusive concert recordings.** Thanks to our collaboration with EBU and the Eurosonic Partnership we have a unique opportunity to offer very recent concert recordings often just a few days old by some of the leading names in contemporary music.
- **Radio Wave Live Sessions** – chamber concerts by the foremost Czech alternative groups, broadcast live. The ČRo Karlín Studio has seen performances by Sunshine, the Nihilists, Priessnitz, Khoiba, Climatizado, 100°C, Landmine Spring and the Prostitutes.



Where can you hear us?

www.wave.cz + DVB-T digital broadcasting (Multiplex 1) and DVB-S (CS Link), some cable TV services, IPTV (O2 TV and Volný TV)

Audio World



Live broadcasts

Czech Radio nationwide and regional station broadcasting on the internet.

Radio on Demand

A unique internet service for listening to broadcast programmes

– allows you to download and listen to specific programmes or to compile your own “station” from selected programmes – your very own request radio

News reports

Recordings of Czech Radio 1 – Radiožurnál news reports from over the last 24 hours in MP3 format

Internet specials

Special-subject internet radio

– Folk radio, Radium, Radiocustica and more...

Podcast

- New technology on the Czech Radio website. Our latest programmes are always available.

Czech Radio's communication with the public

Czech Radio does not only use the airwaves to communicate with the public. We also **co-operate with other media** (such as Czech Television and various daily newspapers), use **public relations** and support different charity projects in the form of media partnership, as well as other publicity activities.

The emphasis is placed on **publicising Czech Radio** as an institution which provides the broadest possible service in the field of radio broadcasting. In recent years great stress has been put on the brand Czech Radio and strengthening and making more precise the position of individual stations on the market. The **unified visual style** of Czech Radio and its stations is important in this regard.

Czech Radio supports many exceptional **charity, educational, cultural and sports institutions** and their activities (in the form of media co-operation). Among our long-term partners are the National Museum, the State Opera, the Administration of Prague Castle, the Czech Olympic Committee and important festivals such as the Prague Spring, the Prague Autumn and others.

Another important part of Czech Radio's activities involves **organising our own events**, such as the regular **Open door Day**, Give Blood with Czech Radio, the Prix Bohemia Radio festival, charity toy collections, etc. Every year a **Czech Radio Yearbook** is published in a Czech-English version; it contains a summary of our programmes and economic results for the previous year. Current information on Czech Radio's stations and their programmes is available on various types of brochures and other printed material.



Archive and Program Fund (APF)

APF Department provides for general care of funds and collections of audio, written, and video materials. The current length of the funds and collections exceeds **12,000 meters**. The length of sound funds exceeds **9,000,000 minutes**, written funds count over **50,000,000 pages**, and the number of books is greater than 50,000.

The funds and collections consist of audio recordings on various types of both historic and current media, music, photographs, personal inheritances, administrative materials, technical documentation, clippings, books, and prints. These are significant from the perspective of historic and cultural usage for program purposes, promotion, and possibly also for commercial purposes. They constitute a valuable source for both radio and general history.

They comprise many unique documents, the most valuable of which are the voices of our presidents, Emperor Franz Joseph, and significant cultural personalities: the Čapek brothers, J. Hora, K. Biebl, scientists F. Křížik, B. Hrozný, J. Pekař, J. Heyrovský, and others. They also capture significant historical moments, such as Munich 1938, May 1945, the political trials of 1950s, August 1968, etc. The fund's written documents consist of real jewels, such as the manuscripts of K. Čapek, B. Martinů, L. Janáček, and J. Suk.



Archive materials can be accessed by the public under set conditions – for more see the **Business Activities / Sale of Licenses** section.

Radioservis, a.s.

Radioservis, a. s. is the Czech Radio publishing house. It publishes the **Týdeník Rozhlas** cultural magazine, which is full of interesting reading and competitions, the only magazine with the complete schedule of all ČRo stations plus a television supplement. **Vydavatelství Radioservis**, a. s. is a music publisher that brings out CDs with spoken-word and music content of all genres. **The book publishers** primarily bring out publications with radio subjects or radio authors.



RADIOSERVIS
T.R. TYDENIK ROZHLAS

The showcase shop for Czech Radio and Czech Television
 Vnohradská 13, Prague 2, Mon-Fri: 9.00-18.00.

The Radioservis mail-order store: e-shop@rozhlas.cz, phone: 222 713 037.
www.radioservis-as.cz www.tydenikrozhlas.cz



Nadační fond
Českého rozhlasu

The Czech Radio Foundation

Světluška

(„Lightning fly“: a symbol that brings „light into darkness“)

The best recognized long-term project of the Czech Radio Foundation is a nation-wide money collection entitled Světluška. Money raised in this annual fundraising event, accompanied by blindness awareness campaign, are carefully distributed to the blind and partially sighted people in a public granting procedure supervised by a Counsel of Experts. Patron of the project is well-known singer Aneta Langerová.

Světluška supports: early intervention care for families with children with multiply disabilities (vision and movement stimulation), personal assistance for blind children integrated to normal schools, purchase of auxiliary aids such as digital reading device with voice output, Braille display, guide dogs, mobility and orientation training (using white cane), vocational skills, sheltered living and supported workplace, daily living skills, recording books on tapes etc. The bank account (ten nines) **99999 99999/0100** is open to donors throughout the whole year.

The Czech Radio Foundation was established at the instigation of the director of Czech Radio, Václav Kasík. In the eight years of existence the foundation granted over 60 million Czech crowns, especially to blind children and partially sighted people who are in desperate or extremely demanding situation.



Contact:

Czech Radio Foundation, Vinohradská 12, 120 99 Praha 2,
tel: +420 22 155 1217-9, e-mail: svetluska@rozhlas.cz,
www.svetluska.net

“Every one sometimes needs light in the darkness.”

Collection account no.: **99999 99999/0100**
DMS SVETLUSKA – send to no. 87777 (contribution 30 CZK)

Prague Radio Symphony Orchestra (PRSO)

The Prague Radio Symphony Orchestra was **established in 1926** and its history dates back to the virtually beginning of Czech Radio's broadcasts. During its existence the orchestra has built up a very high reputation, thanks to its rich programme and ever-improving artistic standards. It has become an essential part of the Czech concert scene and a welcome guest at concert halls abroad.

The PRSO has been led by **many important conductors** over the years, including C. Munch, F. Konwitschny, H. Scherchen, G. Rozhdyestvensky, S. Baudo, L. Segerstam, C. Mackerras and V. Neumann. Among composers whose work the orchestra has premiered are A. Honegger, A. Khachaturjan and K. Penderecki.

Under **chief conductor Vladimír Válek**, who has led it since 1985, the orchestra has reached a very high professional level. At the present time, the PRSO performs concerts within the framework of a season ticket system at the **Dvořák Hall at Prague's Rudolfinum**. It is a regular guest at several important cultural events (such as the Prague Spring, the Prague August, Smetana's Litomyšl, the Moravian Autumn, etc.).

The Prague Radio Symphony Orchestra is proud to regard itself as **one of the most important radio orchestras in Europe**. The artistic standing of the orchestra is confirmed by the positive reaction it meets on foreign tours, both from



Contact:

Symfonický orchestr Českého rozhlasu (SOČR)
Vinohradská 12
120 99 Praha 2, Czech Republic

tel: +420 22 155 1411
www.rozhlas.cz/socr

SOČR





Vladimír Válek

BROLN The **Brno Radio Orchestra of folk instruments** (BROLN) was established in February 1952 with the task of providing interpretations of folk songs and instrumental music to a professional standard. Its make-up is based on that of traditional folk bands, with a basis of strings, dulcimers and clarinets, to which are added such characteristic folk instruments as bagpipes, pipes and mouth harp. After a hiatus of several years the orchestra was revived in April 2006 under František Černý.

Czech Radio Production Centre This was created on 1. 12. 2002 as an all-station Czech Radio project, responsible for the production of artistic programmes – both spoken-word and musical – as well as the Junior Creative Group, and since 2007 the Prix Bohemia Radio international radio production festival.

In collaboration with OMPR the Production Centre organizes regular live hearings for secondary school students within the framework of the Radio Plays project, as well as arranging regular pre-premiere hearings of recently recorded radio plays for the professional public.

audiences and critics. The Prague Radio Symphony Orchestra has appeared in Germany, Italy, Austria, Spain, Turkey, Switzerland, France, Greece, England, South Korea, Japan, China, Taiwan and the United States.

What is also rich is **recording career**. It records for leading companies such as Supraphon, Radioservis, Pony Canyon, Clarton. The latest projects realised in cooperation of Czech Radio and Supraphon include recordings of the complete symphonies of A. Dvořák, P. I. Tchaikovsky and the piano concerts of V. J. Tomášek.



The Production Centre is a Czech Radio umbrella project that produces creative programmes, both talk and music, and organises two musical competitions – Concertino Praga and Concerto Bohemia.

Czech Radio Big Band

The history of the Big Band goes back to the 1960s, when it was called the **Dance and Jazz Orchestra**. It was founded by and first led by the excellent Czech jazz musician and composer **Karel Krautgartner**. Over the years many personalities whose names have become part of Czech jazz history have passed through the orchestra: among them Luděk Hulan, Richard Kubernát, Václav Král, Laco Déczi, Milan Ulrich. In 2002 **Felix Slováček** was replaced as chief conductor of the Czech Radio Big Band by **Václav Kozel**.

Disman Children's Radio Ensemble

The Disman Children's Radio Ensemble was established in **September 1935** and was led until 1973 by its founder, the renowned teacher and radio director **Miloslav Disman**. The ensemble was then taken over by Jan Berger until it came under the leadership of **Zdena and Václav Flegl**. As well as taking part in radio programmes, the ensemble has its own repertoire.

Czech Radio Children's Choir

The choir was established in 1945 and first conducted by **Bohumil Kulínský**, followed by Čestmír Stašek. Since 1992 the choir has been led by **Blanka Kulínská**. The children perform at many radio events in the studios, direct transmissions and public concerts. The choir has achieved a high artistic standard and the children often represent Czech choral art on Czech Radio and abroad.

The Czech Radio Big Band was formed in the 1960s, the Disman Children's Radio Ensemble was established in 1935 and the history of the Czech Radio Children's Choir dates back to 1945.





Prix Bohemia Radio

The Prix Bohemia Radio is a **festival of original radio creativity** and was first held in Mladá Boleslav in **1976**. The categories rotate every year, though it always features an international category. The festival is chaired by Czech Radio's Chief Producent and takes place in Poděbrady at the end of September / the beginning of October.



Concertino Praga

This international radio competition for young musicians is arranged under the patronage of the European Broadcasting Union (EBU) and is a member of the European Union of Music Competitions for Youth (EMCY). It was established in 1966. Recordings of candidates are sent to Czech Radio by organizations affiliated to EBU or members of EMCY. The winners – CP laureates – defend their title at the Winners Concert in Prague and at the South Bohemian CP Festival.



Concerto Bohemia

Czech Radio's competition for young orchestras and ensembles takes place in Prague every year and is a younger sibling to the Concertino Praga. It too was begun by the children and young people music department. Both competitions are based on the same principle: the anonymous appraisal of sound recordings. The upper age limit is 25 and the maximum number of players is 36.

The first annual Prix Bohemia Radio took place in 1976. The Concertino Praga competition was established in 1966 by the children and young people music department, while its younger sibling, the Concerto Bohemia, started several years later.

Technology and Information Technology at Czech Radio

For the production and transmission of radio programmes, Czech Radio naturally uses a large amount of modern equipment. The Czech Radio Technical Section ensures the acquisition, management and optimum usage of such equipment, including in particular information and communications technology (central applications administration, LAN/WAN networks, contribution and distribution systems) and radio technology (equipment at all radio studios and equipment for external broadcasts and recordings).

All internal operations at Czech Radio are fully digitized and like any other modern company, Czech Radio takes great advantage of the recent extremely dynamic developments in computer science. The production and broadcasting (release) of all our programmes is performed within our central computer systems for text processing (news reports), audio (classic radio broadcasting) and multimedia (web presentations and similar activities). Current radio broadcasting is increasingly put out direct for our listeners and that cannot be done without the essential connections to internal systems, so we ensure that "remote" editors always have direct access to internal resources, and then again that it is possible to rapidly process the contributions which they supply and include them in broadcasting. Technical developments allow us to offer programming staff an increasing capacity to modify radio broadcasting (wireless and wired communications, multi-channel sound processing, supplementation of broadcasting with other information – e.g. synchronization of sound broadcasting and additional information published on the internet, RDS-TMC traffic information system data transfer for navigation devices in vehicles and the like).

From the point of view of transmitting individual radio programmes, the most important service is broadcasting centres, which are equipped with digital technology and use recordings made on CD, MD, DAT and direct from computers.

Our stations' own broadcasting is delivered both by using classic analogue systems on long, medium and very short wavebands (LW, MW and VSW) and by digital systems – currently by broadcasting on what is known as a public service multiplex using – DVB-T. Programme distribution by means of individual terrestrial transmitters makes use of satellite connections and because programmes are not coded in any way this can be used for individual reception (with DVB-S). All our stations may be streamed on the internet as a matter of course, and it is also possible to create your own radio channel from a number of programmes using an application that we call “Radio on Demand”.

Another great challenge is the digitization of our radio archives, comprising both audio and text material. This process is taking place not only in Prague, but also at individual regional stations.

The Technical Section also takes care of the technical side of collaboration with our radio partners in the European Broadcasting Union (EBU) – this international exchange of programmes nowadays works on what is practically a quite automatic basis and the complete range is on offer – again via the computer network – to all staff members involved.

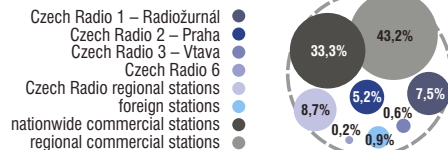
A satellite system is used to distribute the broadcasting signal of nationwide stations: the signal is broadcast from Prague by satellite, from where it is broadcast back to the country and to individual transmitters where it is used as the transmitter's source signal.

Czech Radio and listeners in the polls

Czech Radio, or one of its four nationwide, eleven regional and four specialist stations, is listened to on an average day by one **third of the population** of the Czech Republic aged 12 – 79. According to the results of **RADIO PROJEKT** radio station audience research for the second and third quarters of 2008, Czech Radio had a **22.4% share** in the radio market of the Czech Republic. The listening period for Czech Radio as a whole averages **3.8 hours per day**. At least once a week one of the Czech Radio stations is tuned in to by approximately **2.6 million listeners**, i.e. one third of the population of the Czech Republic aged 12 – 79. In the strongly competitive environment of private broadcasting with three nationwide and over 60 regional and local radio stations, within the framework of Czech Radio the most successful over the long term is **Czech Radio 1 – Radiožurnál**. This station is selected daily by **722,000 listeners**, i.e. 8.2% of the population of the Czech Republic aged 12 – 79. Among its target regions, the **Brno, České Budějovice** and **Pízeň** regional stations lead the competition.

Share of the Czech Radio market according to stations

(second and third quarters 2008)



Information source: ongoing radio station audience research at RADIO PROJEKT, which has been performed for SKMO since 1.1.2006 by MEDIAN and STEM/MARK.

At least once a week one of the Czech Radio stations is tuned in to by some 2.6 million listeners, i.e. one third of the population of the Czech Republic aged 12-79.



Collaboration with the European Broadcasting Union (EBU)

Czech Radio has been substantially involved in international activities since 1993, when after three years of associate membership it became a full active member of the European Broadcasting Union (EBU). The international division at Czech Radio ensures close and regular contact between Czech Radio and both the EBU headquarters and its individual members.

EBU is the largest professional association of national broadcasting organizations in the world, with 120 members in 80 countries. EBU comprises EUROVISION and EURORADIO – a television and radio programme exchange system, organized and coordinated by EBU, based on the programme range offered by its members. EBU represents its members in the European Union with regard to audiovisual matters, and collaborates with other important European institutions, UNESCO and other world broadcasting unions. Every week EBU addresses 650 million viewers and listeners.

Radio collaboration with EBU is many-sided, including music, news reporting, sport, educational and drama programmes, youth programmes, broadcasting for motorists, marketing, training, research, etc... Thanks to its membership in EBU, Czech Radio takes an active share in technical developments, e.g. digital broadcasting and new media. It also deals with legal issues – not only with regard to European legislation – and is involved in the promotion and support of public service.

One of the most highly developed activities at EBU is collaboration within the EURORADIO satellite network, which in the last year has had over 3,100 concerts and opera performances on offer. During the period from September to June the EURORADIO season offers more than 100 direct transmissions from concert, opera and jazz seasons, from special days and from the Metropolitan Opera in New York. Over 250 other concerts are included in the EURORADIO Summer Festivals during the summer period. The EUROSONIC RADIO+ popular music project offers members over 600 concerts each year. Czech Radio presents a considerable amount of national culture in a broad range of genres and regional variations, its selection of music on offer ranking it among the most active EBU organizations. Broadcasts from over 100 international sporting events and important political and economic events are also coordinated through EBU.

The International Relations Department further coordinates participation of the Czech Radio in international radio competitions, host broadcasting services during the Czech EU Presidency and FIS Nordic World Ski Championship and represents the Czech Radio in many other foreign activities.

How Czech Radio is financed

Czech Radio is financed in a mixed way according to law no. 348 from 5. 8. 1994 on radio and television license fees. Around 90% of Czech Radio's total income comes from radio license fees. The remainder comes from commercial activities (selling advertising time, renting free technical capacity, publishing, selling the rights to sound recordings in the archive, etc.).

Czech Radio's employees

On 1. 1. 2009 Czech Radio had 1,486 employees, of whom 1010 work in Prague and the rest in our regional studios.

Commercial Activities

Czech Radio is allowed by law to engage in certain commercial activities, which serve to supplement the organisation's finances to an extent of 10 – 18% of the total budget. Following an amendment to the Czech Republic's laws the importance of commercial activities is decreasing, particularly in the area of radio advertising.

Advertising and Sponsorship

The sale of radio advertisements and sponsorship remain our most important commercial activity. The amount of advertising is limited by the amount of time advertising is allowed (a maximum of three minutes daily on nationwide stations and a maximum of five minutes a day on regional stations). With the exception of news and current affairs programmes all of Czech Radio's programmes and events can be sponsored. The agency ARBOMedia handles advertising on Czech Radio's nationwide stations, while other commercial activities are taken care of by Czech Radio's expert divisions.

Information on conditions for the sale of advertising and sponsorship on Czech Radio, including prices, can be obtained from:

ARBOMedia.net Praha, spol. s r. o.

(exclusive representative for nationwide stations for the sale of advertising in broadcasting studios)

Janáčkovo nábřeží 51, 150 00 Praha 5, Phone: +420 251 082 111, e-mail: pr@arbomedia.cz

The Sale of Licenses

Interested parties can obtain **mechanical rights** to certain titles from Czech Radio's rich archive, including titles which are of great importance in the history of the Czech Republic. Those rights allow (with the observation of further conditions under the copyright law) for the release of those recordings on commercial formats (CD, MC, CD ROM, video, film etc.).

Contact: Český rozhlas, Vinohradská 12, 120 99 Praha 2, Tel.: +420 22 155 1346
e-mail: licence@rozhlas.cz

Rental of recording studios, outside broadcast equipment, audio support services for events

According to availability Czech Radio offers its recording studios and outside broadcast equipment for short-term rental. Prices are according to a set price-list.

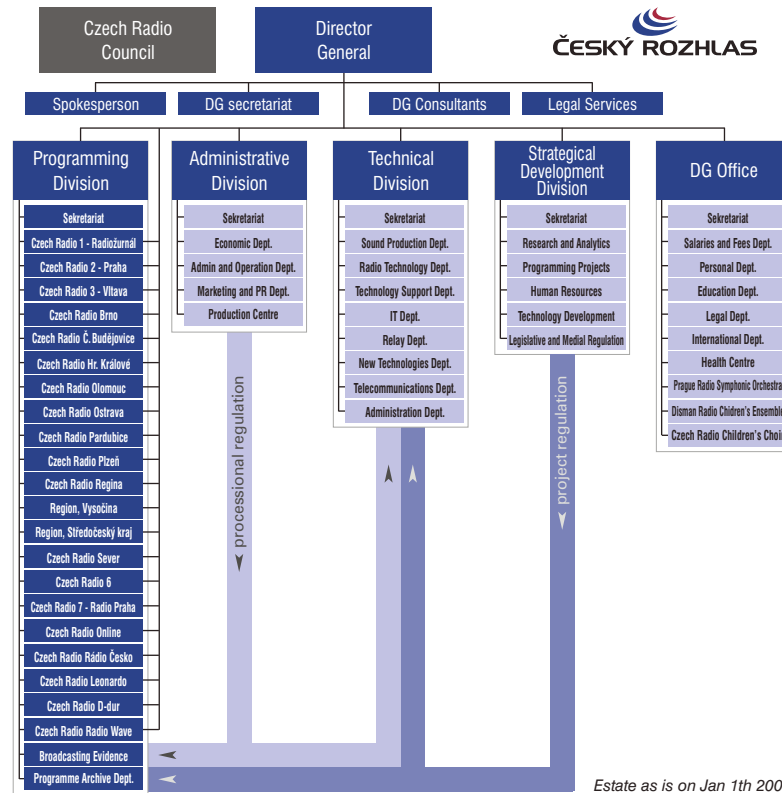
Contact: Český rozhlas, Vinohradská 12, 120 99 Praha 2, Tel.: +420 22 155 1303
e-mail: obchod@rozhlas.cz

Recording of Particular Programmes

If listeners would like to obtain a copy of a favourite programme or an excerpt from a Czech Radio broadcast, we can make recordings for private use (which may not be rebroadcast). Prices are according to a set price-list.

Contact: Český rozhlas, Vinohradská 12, 120 99 Praha 2, Tel.: +420 22 155 1341
e-mail: info@rozhlas.cz

Interested parties can obtain mechanical rights to certain titles from Czech Radio's rich archive, including titles which are of great importance in the history of the Czech Republic.



Estate as is on Jan 1th 2009

1923

History of Czech (oslovak) Radio

18. 5. – PRAGUE - start of regular broadcasting from a tent at Kbely (Czechoslovakia the second country after Britain to broadcast regularly in Europe)
1. 8. – first sports broadcast (boxing from Letná)
1. 9. – BRNO - start of studio broadcasting
12. 2. – first live opera broadcast (Národní divadlo, Prague - Smetana's "The Two Widows")
28. 1. – first Czech broadcasting station starts operating in Prague - Staré Strašnice
28. 10. – first live broadcast of presidential address
– Agricultural Radio begins regular broadcasting - first specialized radio broadcast in Europe
1. 4. – time signal introduced
1. 10. – Foundation of Prague Radio Symphony Orchestra
23. 10. – BRATISLAVA - start of studio broadcasting
26. 10. – first international opera broadcast (Opera Comique in Paris - "The Bartered Bride")
1. 7. – MORAVSKÁ OSTRAVA - start of studio broadcasting
8. 9. – first transoceanic broadcast from New York
9. 10. – first broadcast from wax cylinder recording
10. 12. – Ceremonial opening of the new Czechoslovak Radio building in Fochova třída (now Vinohradská 12 in Prague Vinohrady), in which the institution still has its headquarters today
– foundation of the Dismal Children's Radio Ensemble
31. 8. – RADIO PRAHA begins broadcasting abroad
5. 5. – Prague Uprising begins with radio appeal for help
- May – second station of Czechoslovak Radio begins broadcasting - PRAHA II > Československo > Hvězda (after 1968) > Československo (after 1989) > ČRo 1 - RADIOŽURNÁL (1993)
- end of year – PLZEŇ and ČESKÉ BUDĚJOVICE - start of studio broadcasting
– HRADEC KRÁLOVÉ and ÚSTÍ n/L - start of studio broadcasting
– start of TV broadcasting (TV part of radio until 1957)
– introduction of radio by wire
– first VHF transmitter begins transmitting on Petřín in Prague
1. 3. – first stereo broadcast (jointly by Praha station and TV)
– Regional station for Prague and C. Bohemia (after 91 REGINA PRAHA) begins broadcasting
– foundation of international competition for young musicians "Concertino Praga"
– active participation of radio in the political changes in society (direct transmissions from public meetings, discussion programs...)
21. 8. – fighting at the radio (15 dead)
– foundation of festival of original radio production "Prix Bohemia Radio"
– Act on Radio and TV Broadcasting passed, enabling operation of private channels
– Czech National Council passes act on the establishment of Czech Radio as an independent public entity

1926

1927

1928

1929

1930

1932

1935

1936

1945

1953

1954

1958

1964

1966

1968

1976

1991

1992

1994

1995

1997

1998

1999

2000

2001

2002

2003

2004

2005

2006

2008

31. 3. – foundation of radio competition for young chamber orchestras "Concerto Bohemia"
1. 7. – OLMOUC - start of studio broadcasting
1. 7. – Czech Radio Record Company begins operating
6. 11. – Czech Radio 6 / RADIO FREE EUROPE begins broadcasting
– Act No. 135/1997 passed, amending level of radio license fees to 37 CZK and volume of advertising time on nationwide and regional channels of Czech Radio to 3 and 5 minutes per day respectively
1. 5. – website www.cro.cz started
11. 2. – opening Czech Radio Ústí nad Labem branch office in Liberec
1. 7. – the Czech Radio Board appointed Václav Kasík the Director General of Czech Radio
18. 5. – ceremonial opening of new Studio Building at Řimská street
29. 10. – broadcasting in Russian (Czech Radio 7 – Radio Praha) begins
31. 8. – 65. anniversary of the start of Czech Radio broadcasts abroad
4. 3. – Czech Radio Pardubice begins broadcasting
1. 5. – launch of special broadcasts for foreigners living in the Czech Republic. Broadcasting in English, German, Spanish, French and Russian by Czech Radio 7 - Radio Prague, international broadcasting becomes part of the new set up at Czech Radio 6 (formerly Czech Radio 6/Radio Free Europe).
17. 6. – Czech Radio Region begins broadcasting for the region of Vysočina
11. 9. – 30th Give Blood with Czech Radio campaign takes place
1. 10. – after the American side stops financing the Czech broadcasts of Radio Free Europe the news-current affairs station Czech Radio 6/Radio Free Europe is renamed Czech Radio 6.
1. 10. – Czech Radio Ústí nad Labem changed the name on Czech Radio Sever.
21. 10. – Czech Radio regional broadcasting for Central Bohemia under the name Czech Radio Region, Central Bohemia (the previously used name Czech Radio Regina is now exclusively used for Czech Radio broadcasting in the Prague metropolitan area)
– 80th anniversary of the launch of regular radio broadcasting in the Czech lands
14. 12. – first regular broadcasting from Zlín
1. 5. – in conjunction with planned transformation to digital broadcasting, Rádio Česko and D-dur stations started its operation
30. 5. – Czech Radio Sever started regular broadcasting for Liberec and Jablonec region
– starts broadcasting Czech Radio Leonardo (on the Internet since September, digital since 21 October)
13. 1. – 1:13 p.m. (13:13 military time) launch of Czech Radio 4 – Radio Wave
1. 10. – Czech Radio 1, Czech Radio 2, Czech Radio 3, Czech Radio Wave, Czech Radio Rádio Česko, Czech Radio D-dur and Czech Radio Leonardo start broadcasting on Multiplex 1.



International Relations Department:tel.: +420 22 155 1252, intrel@rozhlas.cz**Director General
Secretary**tel.: +420 22 155 1200
+420 22 155 1202
+42022 155 1203
fax: +42022 422 2223**Director General
Office**tel.: +420 22 155 1208
+420 22 155 1209
fax: +420 22 422 2223**Programming
Division Office**tel.: +420 22 155 1207
fax: +420 22 155 1242**Administrative
Division Office**tel.: +420 22 155 1241
fax: +420 22 272 1242**Technical Division
Office**tel.: +420 22 155 3250
fax: +420 22 155 3253**Programme Information
Dept.**tel.: +420 22 155 1313
fax: +420 22 155 1342
ohlasy@rozhlas.cz**Czech Radio 1 -
Radiožurnál**

tel.: +420 22 155 2127

radiozurnal@rozhlas.cz**Czech Radio 2 - Praha**

tel.: +420 22 155 2500

paha@rozhlas.cz**Czech Radio 3 - Vltava**

tel.: +420 22 155 2677

vltava@rozhlas.cz**Czech Radio 6**tel.: +420 22 155 2701
fax: +420 22 155 2736cro6@rozhlas.cz**Czech Radio 7 - Radio
Praha**tel.: +420 22 155 2901
fax: +420 22 155 2903
cr@radio.cz**Czech Radio Online**tel.: +420 22 155 2800
fax: +420 22 155 2802online@rozhlas.cz**Czech Radio 4 –
Radio Wave**ICQ: 244238260
tel.: +420 22 155 2333
radiowave@rozhlas.cz**Czech Radio
Rádio Česko**

tel.: +420 22 155 2195

cesko@rozhlas.cz**Czech Radio D-dur**d-dur@rozhlas.cz**Czech Radio Leonardo**

tel.: +420 22 155 2832

leonardo@rozhlas.cz**Information** and all phone contacts through operator **+420 22 155 1111****Czech Radio Brno**Beethovenova 4
657 42 Brnotel.: +420 542 523 111
fax: +420 542 523 156
info@bo.rozhlas.cz**Zlín Redaction:**Osvoboditelů 187
760 01 Zlín
tel.: +420 577 004 159
fax: +420 577 004 153zlin@bo.rozhlas.cz**Czech Radio Plzeň**Náměstí Míru 10
320 70 Plzeň
tel.: +420 377 488 111
fax: +420 377 488 110
info@pl.rozhlas.cz**Karlovy Vary Redaction:**Zitkova 1150/3
360 01 Karlovy Vary
tel.: +420 353 222 232
fax: +420 353 222 232
karlovyvary@rozhlas.cz**Czech Radio
České Budějovice**U tří lvů 1
370 29 Č. Budějovice
tel.: +420 386 797 111
fax: +420 386 797 230
zpravy@cb.rozhlas.cz**Czech Radio Olomouc**Horní náměstí 21
771 06 Olomouc
tel.: +420 585 100 111
fax: +420 585 100 120
rozhlask@ol.rozhlas.cz**Czech Radio Regina**Hybešova 10
186 72 Praha 8
tel.: +420 272 170 111
fax: +420 222 322 326
regina@rozhlas.cz**Radioservis**Jeseniova 36
130 00 Praha 3
tel.: +420 222 711 028
fax: +420 222 712 616
info@radioservis-as.cz**Czech Radio
Hradec Králové**Havlíčková 292
500 01 Hradec Králové
tel.: +420 495 011 120
fax: +420 495 011 444
rozhlask@hk.rozhlas.cz**Czech Radio Ostrava**Dr. Šmerala 2
702 00 Ostrava
tel.: +420 596 203 111
fax: +420 596 120 679
rzp@ov.rozhlas.cz**Czech Radio Region,
Středočeský kraj**Hybešova 10
186 72 Praha 8
tel.: +420 272 170 111
fax: +420 272 170 242
region@rozhlas.cz**Prague Radio
Symphony Orchestra**tel.: +420 22 155 1401
fax: +420 22 155 1413
socr@rozhlas.cz**Czech Radio Region,
Vysočina**Masarykovo náměstí 42
586 01 Jihlava
tel.: +420 567 310 900
fax: +420 567 301 600
prorregion@rozhlas.cz**Czech Radio Pardubice**Sv. Anežky České 29
530 02 Pardubice
tel.: +420 466 530 070
fax: +420 466 530 070
pardubice@rozhlas.cz**Czech Radio Sever**Na Schodech 10
400 01 Ústí nad Labem
tel.: +420 475 211 686
rozhlask@sever.rozhlas.cz**Liberec Redaction:**Modrá 1048
460 06 Liberec
tel.: +420 221 553 703
fax: +420 221 553 601
redakce.liberec@rozhlas.cz